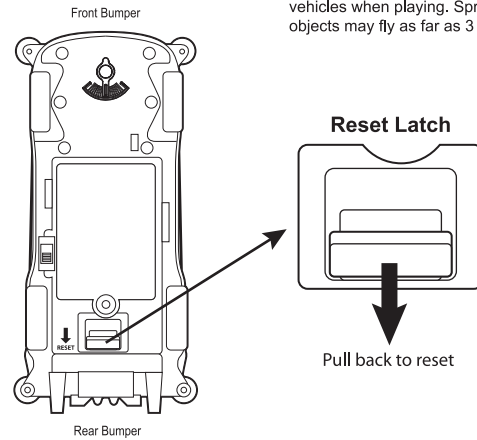


****IMPORTANT: PLEASE READ BEFORE OPERATING****

Reattaching Hood & Doors Back Onto Vehicle Before You Play

To reattach hood and doors back onto vehicle, you must first reset the rear bumper. Pull the Reset Latch back until you hear a click, then plug the hood and doors back into place one at a time.

Warning: Keep a safe distance from vehicles when playing. Spring loaded objects may fly as far as 3 feet.



Right side door plugs into passenger side. Inner side of door is indicated with an R.

